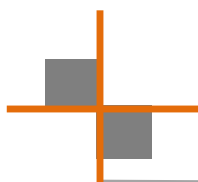


www.interchangecorp.com



EQUIPMENT SOLUTIONS FOR SPECIFIC REQUIREMENTS

What We Provide...

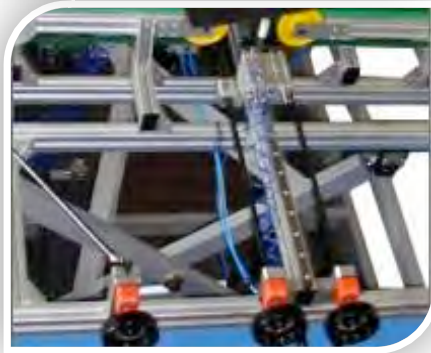
- **Expertise:** A team of experts with over 20 years of manufacturing experience
- **Solutions:** Equipment solutions for specific requirements
- **Innovation:** The most innovative, cost-effective equipment choices available
- **Turnkey Packages:** Complete equipment packages encompassing the needs of the printer
- **Alliances:** Strategic alliances with the best screen printing manufacturers in the world

Equipment Solutions for Specific Requirements



Dryers

Whether drying textiles or graphics in platisol, waterbase, UV, digital inkjet or industrial applications, Interchange manufactures a wide range of gas and electric dryers that effectively cure any substrate



Glass

With a comprehensive range of semi-automatic to fully automatic lines available, Interchange can professionally support the automotive, architectural, gaming, solar cell, appliance and decorative glass industries.



Industrial

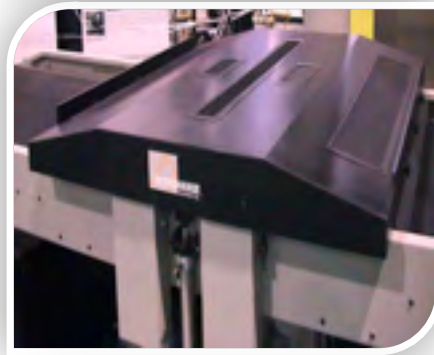
By identifying the needs of the O.E.M printer, Interchange offers an array of presses and dryers that are specifically designed for printing membrane switches, electronics, overlays, nameplates, medical device and other industrial grade printing applications

Equipment Solutions for Specific Requirements



Graphics

With a primary focus on industrial presses, the alliances forged with high-end ISO certified machinery manufacturers enables Interchange to bring to market the most innovative and technologically advanced graphic lines of presses and dryers.



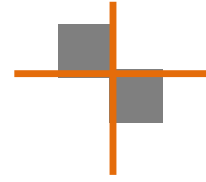
Ultra Violet (UV)

Offering a wide variety of sizes and types of state of the art UV dryers, Interchange is certain an UV solution can be achieved.



Parts and Service

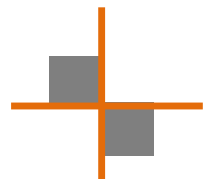
Realizing the equipment is only as good as the support team behind it, Interchange offers a wide range of replacement parts for various equipment manufacturers as well as a technical field and phone support to accompany them.



HOT AIR & COMBINATION DRYERS

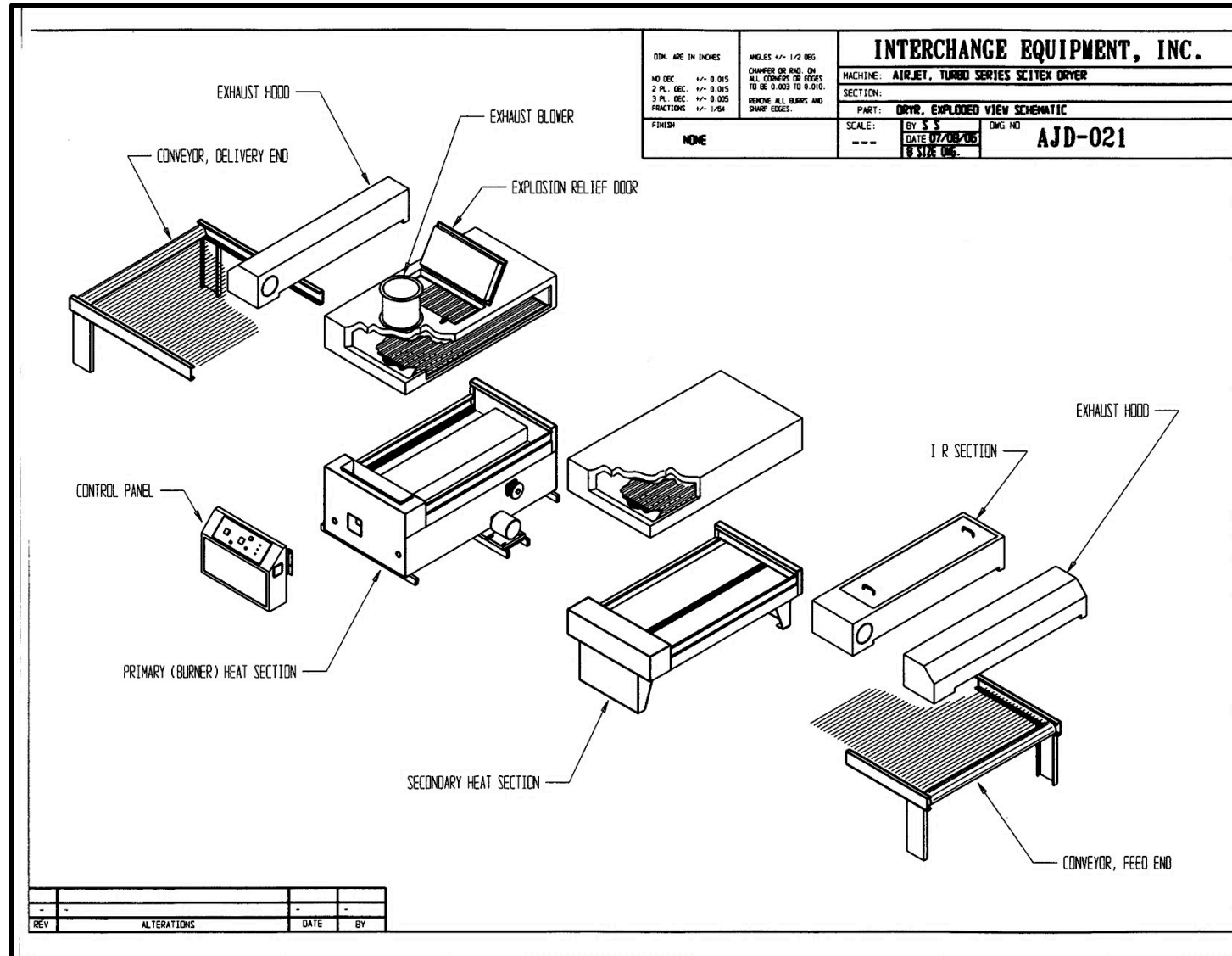


www.interchange corp.com

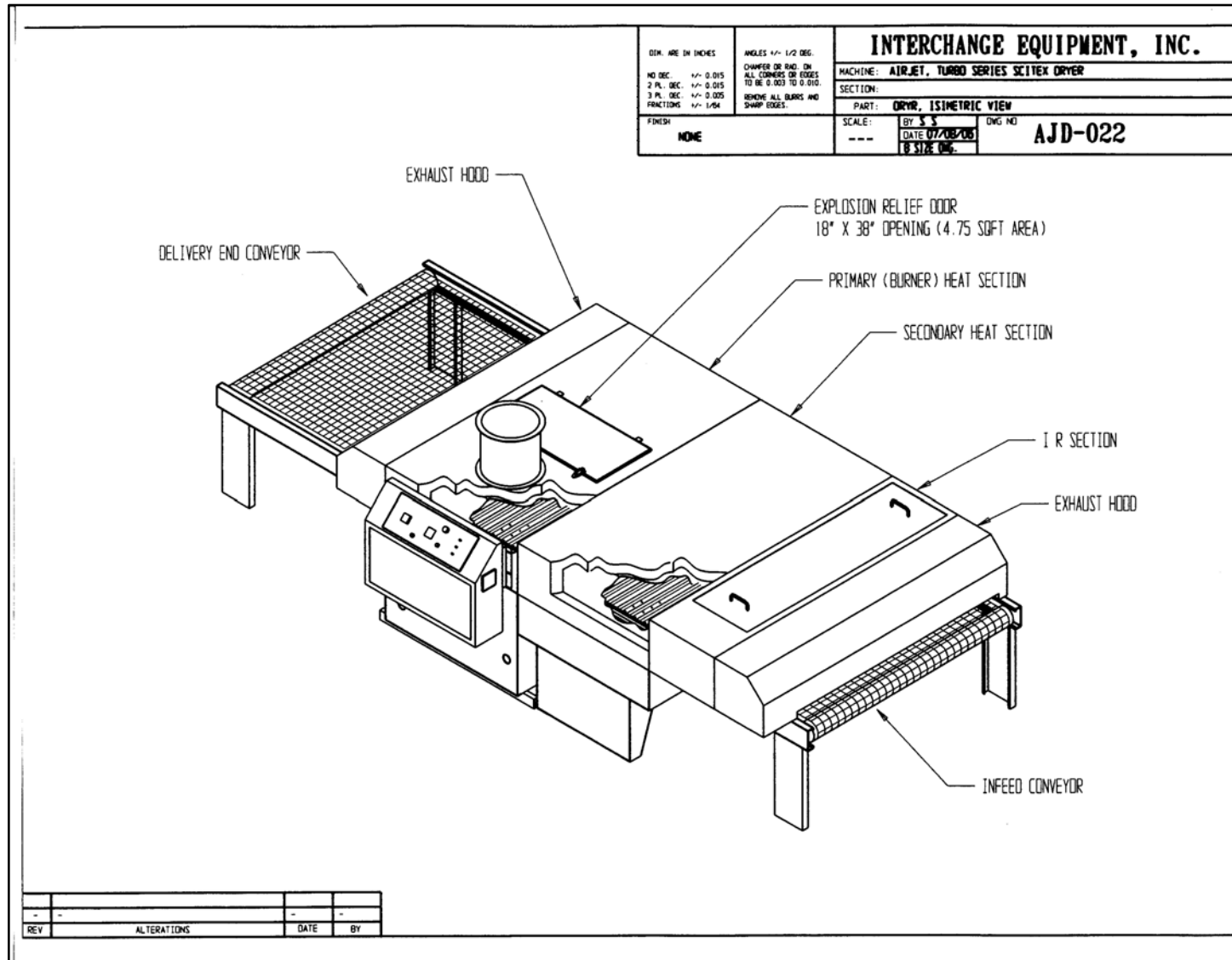


EQUIPMENT SOLUTIONS FOR SPECIFIC REQUIREMENTS

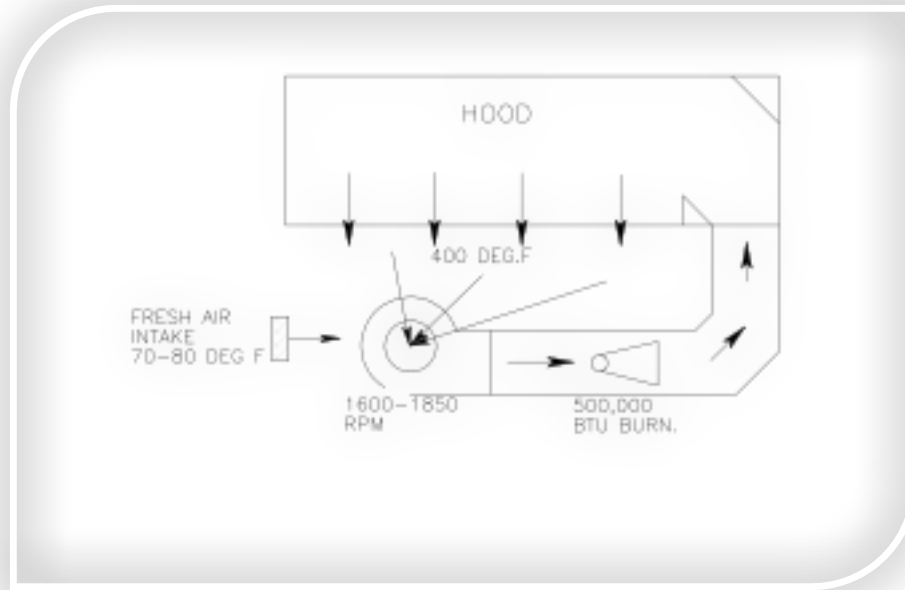
AirJet Exploded View



AirJet Exploded View

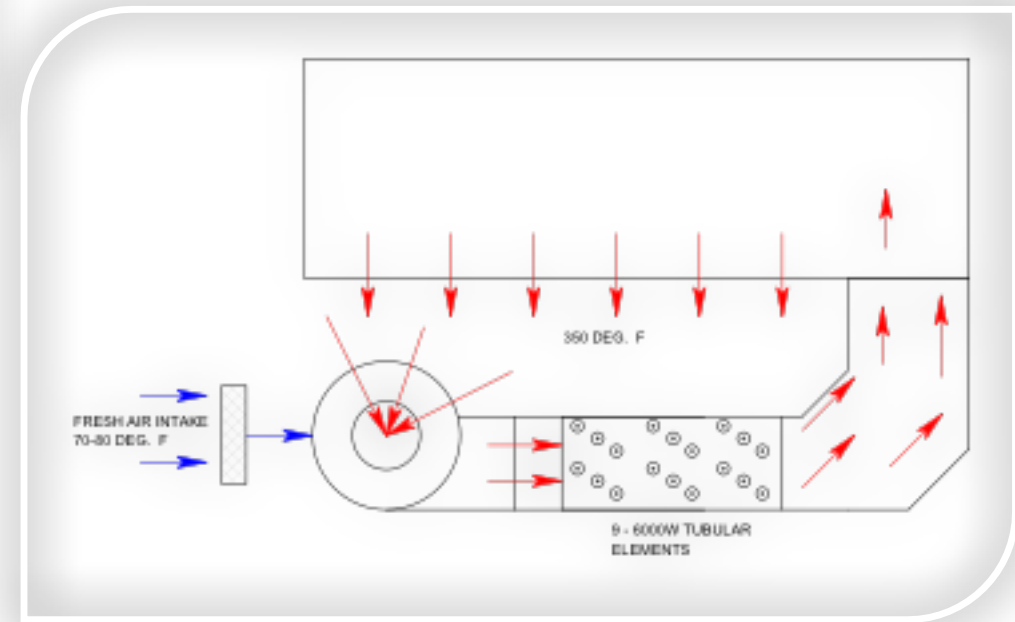


AirJet Exploded View



AirJet Airflow – Gas Dryer

AirJet Airflow – Electric Dryer



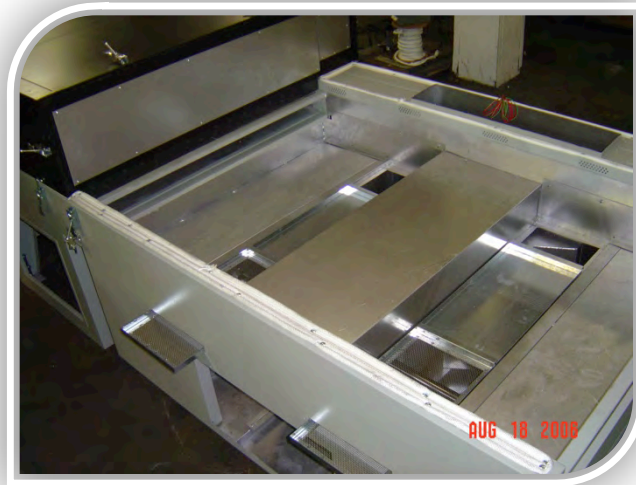
AirJet



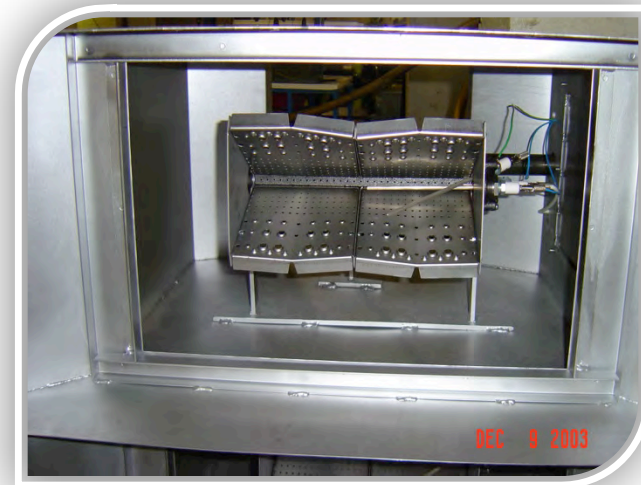
AirJet BURNER



AirJet CONTROL PANEL



AirJet FILTER RETURN



AirJet BURNER BASKET

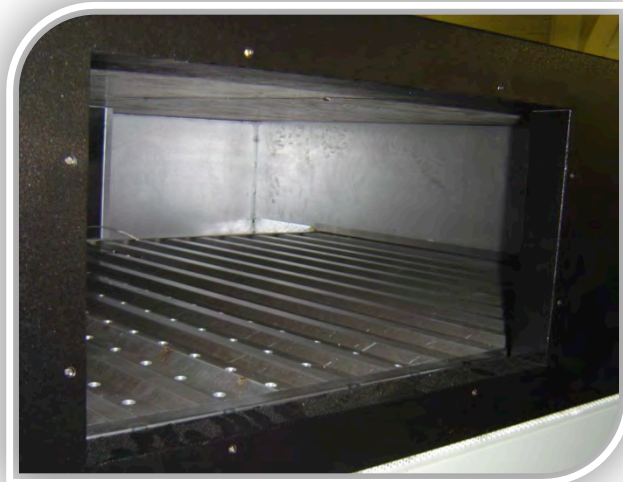
AirJet



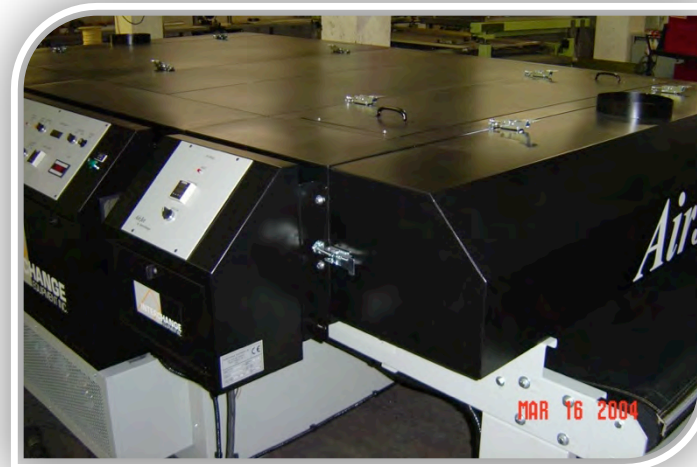
AirJet EXIT



AirJet FRESH AIR INTAKE



AirJet HOOD CLEAN DOOR



AirJet IR AND HOT AIR

AirJet



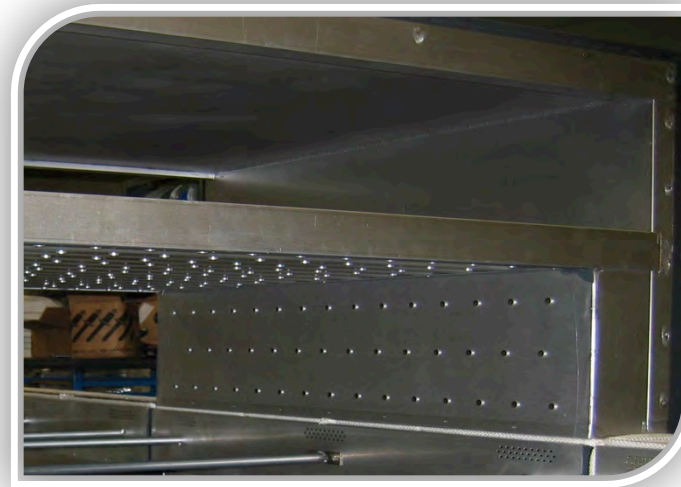
AirJet SPLIT BELT OPTION



AirJet OPTIONAL SIDE AIR NOZZLES



AirJet HOOD OVERALL VIEW



AirJet PLENUM

Textile



THE SPACE SAVING DRYER...designed to fit into the most modest budget!

The *MD-8* is a compact, powerful gas fired dryer designed to cure a wide variety of substrates. The *MD-8* has many of the same terrific features as the *AirJet*, with a space saving footprint and a price that fits into even the most modest budget. Only the *MD-8* offers our patented Air Deflector recycling system which re-circulates heated air through the heat chamber. The Interchange air nozzle heat distribution is a feature found only on dryers which cost much more.

STANDARD FEATURES

- o Air Deflector re-circulating system
- o Powerful 250,000 BTU stainless steel burner
- o Higher velocity jet nozzles for better air distribution
- o Enlarged heat plenum for maximum air velocity
- o High temp self tracking belt
- o Standard 8' oven section
- o Slide out E-Z clean filter drawer
- o Side access clean out door
- o Easy access controls
- o ETL and CE approved

Textile



THE COST EFFECTIVE DRYER...designed to cure a wide range of substrates!

The *AirJet* features our patented Air Deflector recycling system which re-circulates heated air evenly throughout the chamber, providing a 30% more efficient use of energy with a substantial cost savings. In addition, our exclusive Optic Sensor belt tracking system ensures consistent belt performance. The modular design, with a generous 12' standard oven section, easily expands with your business making the *AirJet* dryer the state of the art choice to complete your print-dry lines. Gas and electric models available.

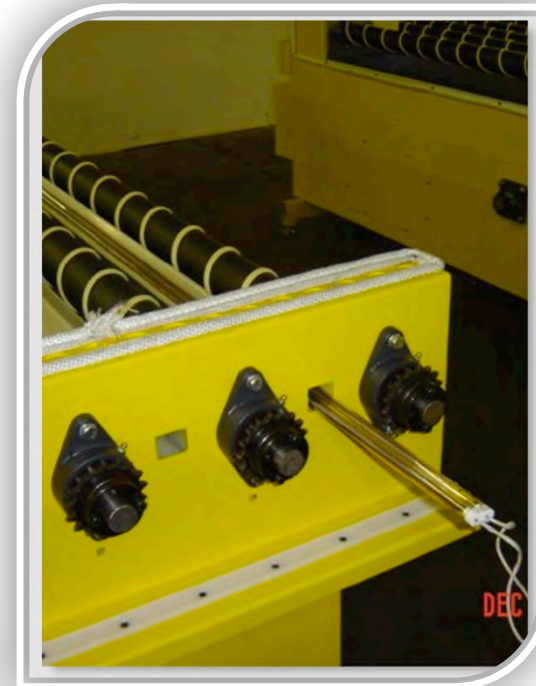
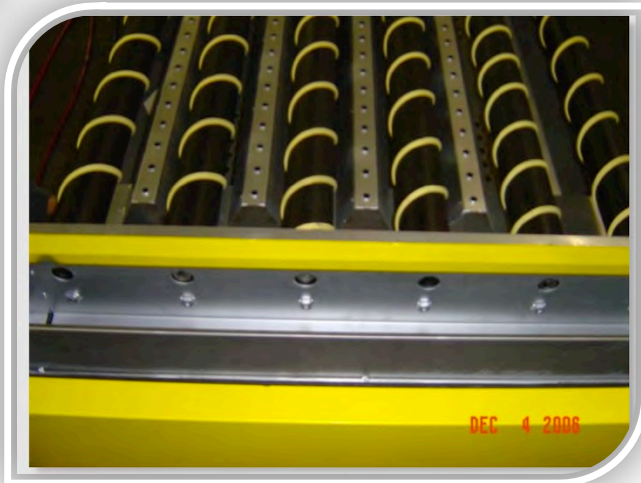
STANDARD FEATURES

- o Air Deflector re-circulating system
- o Efficient 500,000 BTU stainless steel burner
- o Higher velocity jet nozzles replace standard air knives
- o Enlarged heat plenum for maximum air velocity
- o Graphic and Textile models available
- o Expandable, modular design
- o On board diagnostic system
- o 48", 60", 76", 86" sizes available
- o Slide out E-Z clean filter drawer
- o Access door for cleaning
- o Standard 12' oven section
- o ETL and CE approved

Industrial Glass



Up to 108" / 2.75 meter wide IR Combi Jet Dryer for industrial or architectural glass. Heavy duty live roller transport system for up to 1" thick glass panels. Cooling from top and bottom of glass for optimum cooling performance.

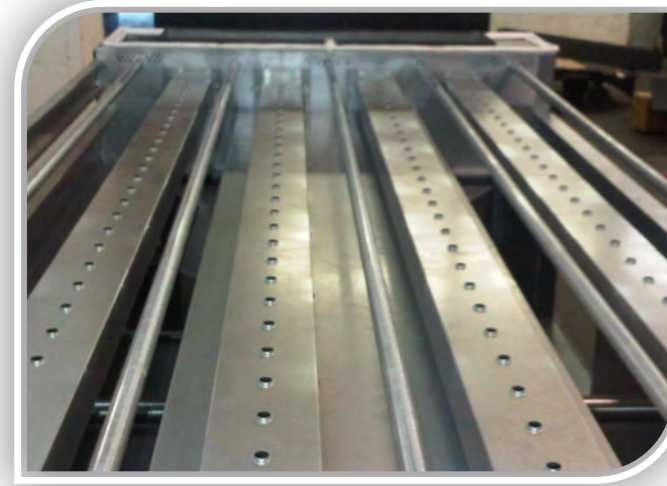


Twin Quartz IR tubes with gold reflectors. IR tubes can be positioned on top or under conveyor for optimum drying performance

Industrial



AirJet HINGED HOOD FOR ACCESS



AirJet Under Heating and Cooling

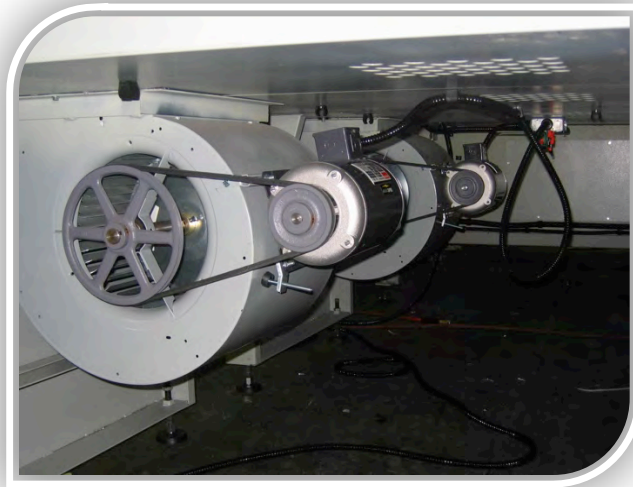


AirJet Glass IR BLOW OFF VALVE



AirJet "Prep" for IR/QUARTZ

Industrial



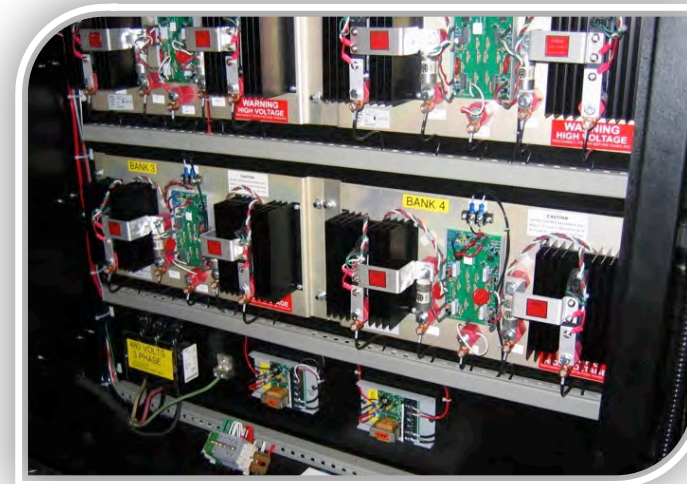
AirJet AMBIENT COOL BLOWER



AirJet "ROLLER" EXIT



AirJet ELECTRIC HEATING ELEMENTS



AirJet ELECTRIC HEATING ELEMENTS
WIRING

Industrial - IR Quartz



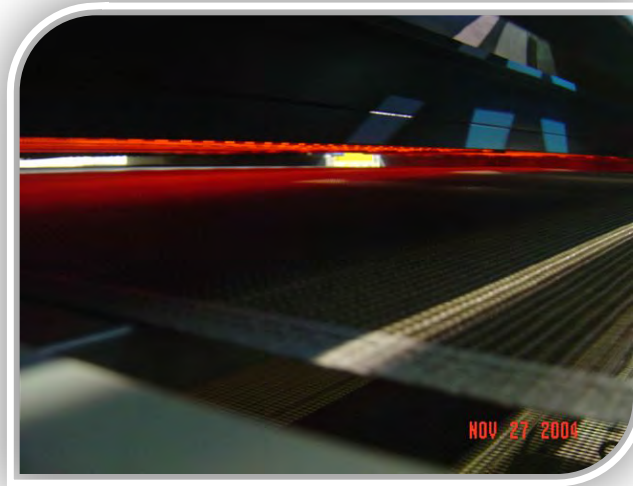
AirJet REFRIGERATED COOL SECTION



AirJet PANEL SIDE VIEW

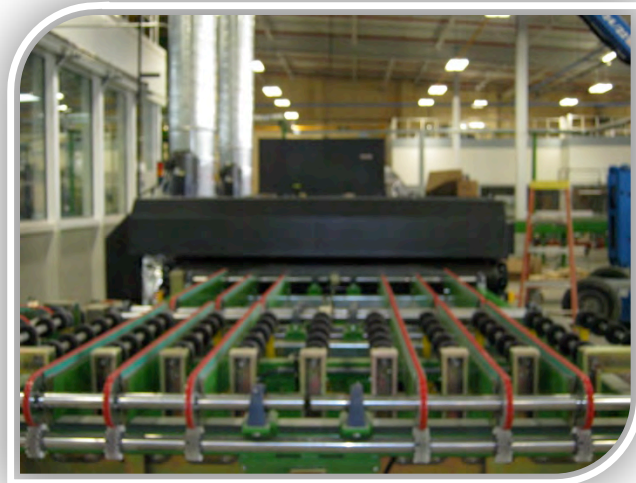


AirJet IR/QUARTZ TUBES EASY ACCESS



AirJet IR/QUARTZ TUBES

Industrial - Refrigerated Cooling



AirJet EXIT – INLINE AUTOMOTIVE LINE



AirJet ALLEN-BRADLEY PLC



AirJet OVERAL VIEW

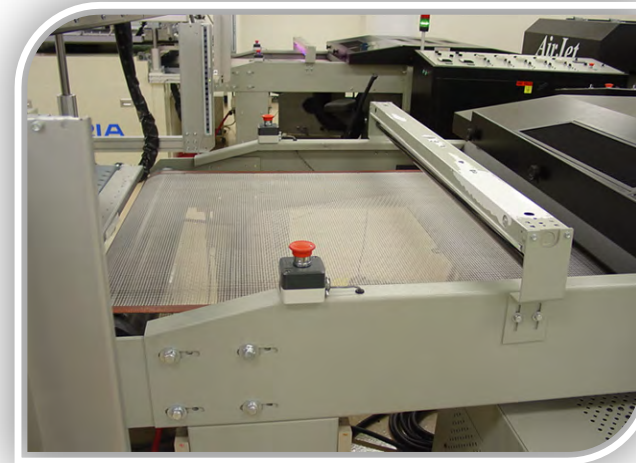


AirJet EXIT VIEW

AirJet Combi Dryers



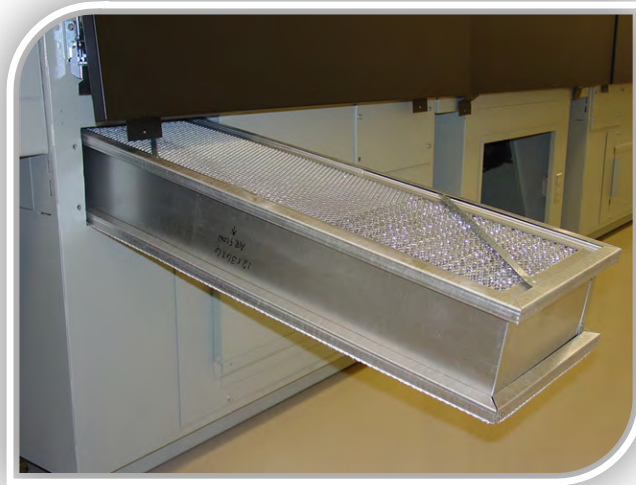
AirJet UV and HOT AIR



AirJet MOUNTED "BLACK LIGHT"
INDICATOR



AirJet - CATWALKS



AirJet HEPA FILTER

Touch Panel Display



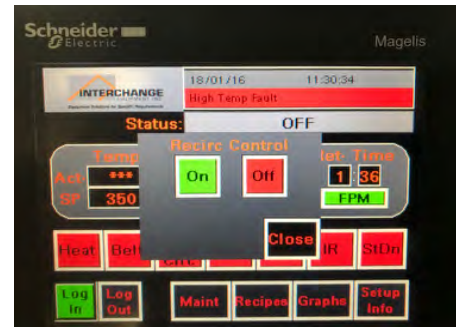
Main Screen



On/Off Heat



On/Off Belt



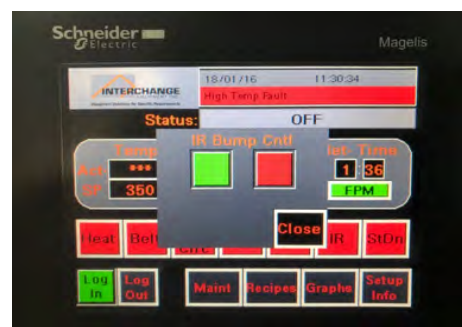
On/Off Blower



On/Off Exhaust



On/Off Cool Section



On/Off IR-Quartz Tubes



Start Up - Shutdown

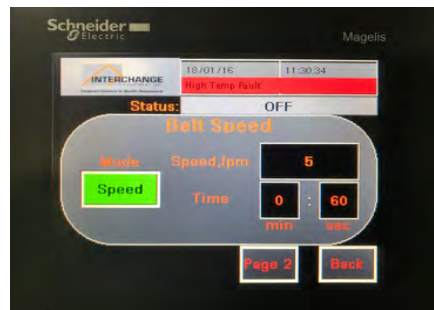
Touch Panel Display



Set Up Screen



Set Temperature



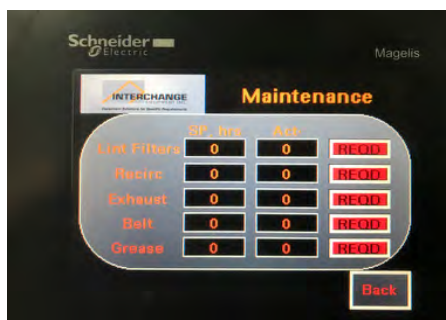
Belt Speed or Retention Time



Belt Speed Parameters



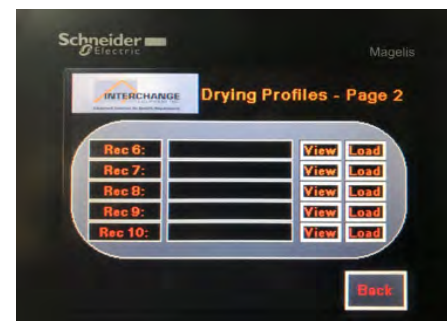
Alarms



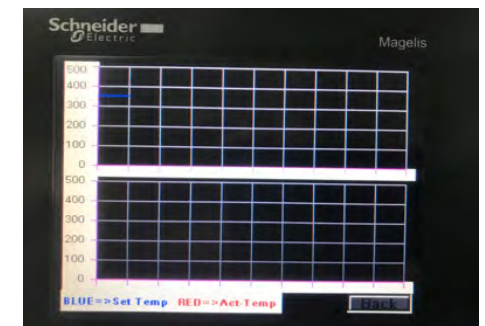
Maintenance Reminders



Saved Drying Profiles 1-5

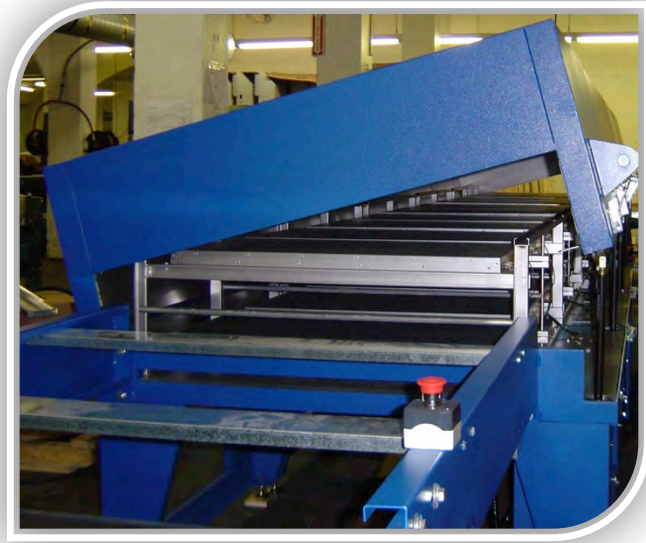


Saved Drying Profiles 6-10



Heat Graph - Actual vs Set

Infra Red Panel Dryers



AirJet HINGED HOOD



AirJet TOP AND BOTTOM IR CURING

Glassware / Mug Dryers



Extended Infeed with rigid support enables multiple printers feeding one dryer - Maximum Production



Direct Placement of Glassware onto belt

Solar Industry Curing Dryers



Solar Panel Curing Dryer - Percentage Display



Individual Controlled Heat Sections



Exit End - With exhaust Hoods



Belt "stepper motor" Functions for Lab environment

Digital Dryers



AirJet SPLIT BELT RETURN – DIGITAL TEXTILE



AirJet – RETURN BELT DIGITAL TEXTILE



AirJet – DIGITAL HIGH SPEED GRAPHICS



AirJet – AMBIENT COOL BRIDGE

Digital Dryers



AirJet - INFEED RECIEVER BRIDGE



AirJet - TRANSITION BLOWER

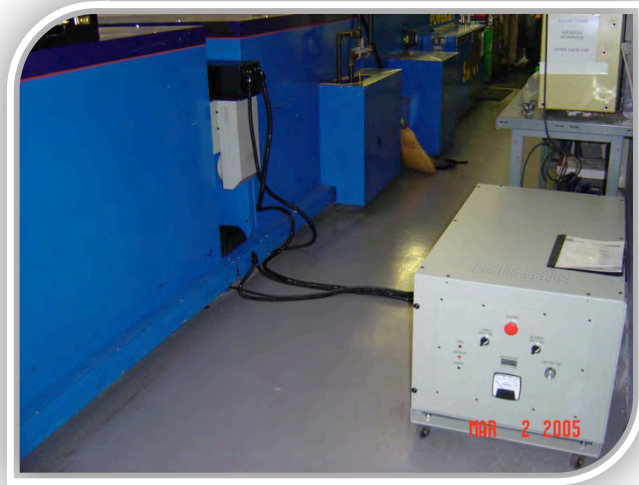


AirJet - HIGH SPEED DIGITAL DRYER



AirJet - AMBIENT COOL BRIDGE

Ultra Violet (UV Jet)



UVJet – ADD ON UV SECTION



UVJet MOVEABLE CONTROL PANEL

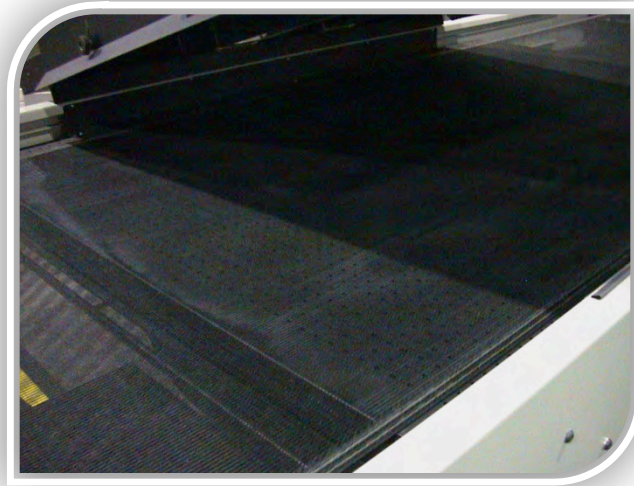


UVJet – SIDE MAGAZINE LOADING OF UV CASSETTE AND BULB CHANGE

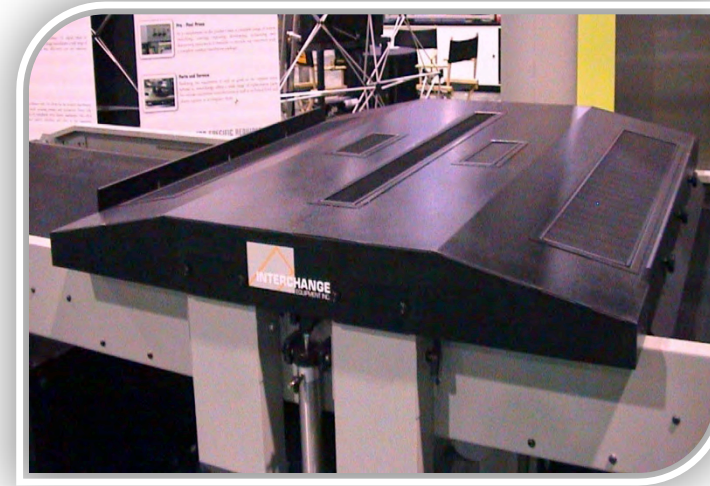


UVJet – MAGAZINE LOAD IRRADIATOR

Ultra Violet (UV Jet)



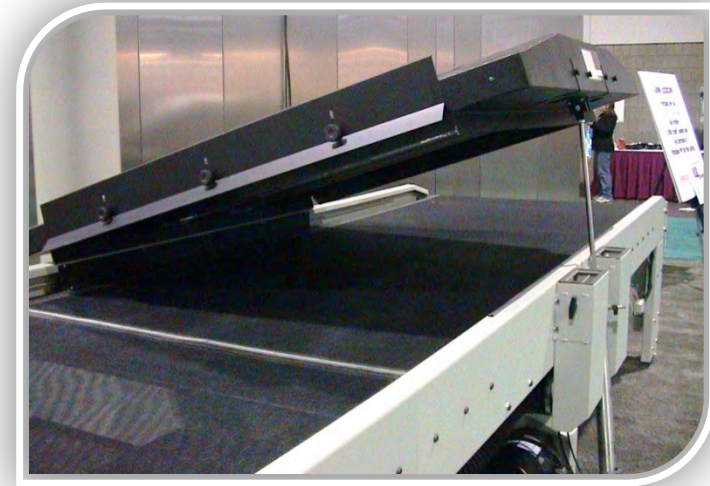
UVJET – VACUUM HOLD DOWN



UVJet – UV HOOD



UVJet – PNUEMATIC HOOD LIFT



UVJet – PNUEMATIC HOOD LIFT